



CONNECT WITH US ONLINE TO EXPLORE NAKAMICHI'S COMPLETE RANGE,
INSTRUCTIONS & SOFTWARE DOWNLOADS AND WARRANTY REGISTRATION.
WWW.NAKAMICHI-CARAUDIO.COM
f nakamichi.global @ nakamichi.caraudio

UNIVERSAL REAR VIEW AHD CAMERA

nakamichicaraudio.com f nakamichi.global @ nakamichi.caraudio

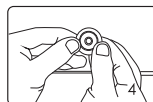
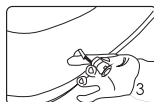
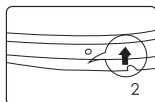
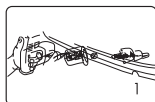
SPECIFICATIONS

Sensor Chip	N1080M	Waterproof	IP68
Wide Angle	160°	Array Size	1920H x 1080V
Video Output	AHD1080P	Pixel Size	3.0um H x 3.0um V
Video Format	PAL	Cable	BMW-DC
Power	DC 12V	parking with moving	Support

INSTALLATION

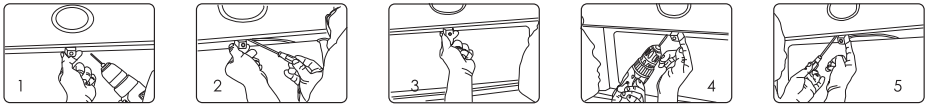
Please read these instructions carefully before installation and use. Installation should be performed by professional staff.

A. INSTALLATION INSTRUCTION FOR EMBEDDED/PUNCHING CAMERA



- 1.Before making a hole in the car, please make sure the diameter of the camera equal to the drill bit.
- 2.According to the arrow indicated direction (up) to install .
- 3.Insert the lead wire of the camera into the hole and then begin to install the camera.
- 4.As above diagram, using two thumbs to push the camera into the car with balanced forces.

B. INSTALLATION INSTRUCTION FOR HANGING CAMERA



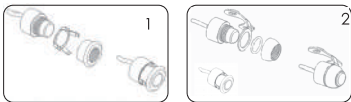
- 1. For easy installation, please use drill to open a screw hole at the appropriate position in the rear license plate of the car.
- 2. Tighten the first screw into the screw hole with screw driver.
- 3. Please adjust the camera's position according to the actual display on the monitor.
- 4. After adjustment, please use drill to open the second screw hole.
- 5. After fixing the second screw, all the installation are finished.

C. INSTALLATION INSTRUCTION FOR LICENSE PLATE



- 1. Take out of the license plate ,adjust the direction up and down.
- 2. Alignment license plate to the installation location of the car.
- 3. Tighten the screws,install the license plate frame camera.
- 4. Adjust up and down angles of the camera, then fixed the screw.

D. ASSEMBLY DIAGRAM FOR EXCHANGING THE FRONT HOUSING OF PUNCHING/EMBEDDED AND HANGING CAMERA.



- 1. As above diagram shown, change the front housing of embedded / punching camera to hanging one.
- 2. As above diagram shown, change the front housing of hanging camera to embedded/punching one.

IMAGE INSTRUCTION



WHAT'S IN THE BOX

- 1. Camera x1pc
- 2. 6m Video Cable x1pc
- 3. Ø7×10 mm Screw x3pcs
- 4. User Manual x1pc
- 5. 3M Adhesive x1pc