



# NSW-X1204D4

## User Manual



---

# 12" DVC SUBWOOFER

---



# YOUR SUBWOOFER

---

## Dear Customer,

Congratulations on purchasing our Nakamichi mobile system product for your sound system.

This product has been designed and manufactured to Nakamichi's exacting standards to ensure many years of audio enjoyment. For the best performance, we recommend that you have your Nakamichi product installed by an authorized Nakamichi dealer.

If you would like to install this product on your own, we recommend for you to go through this manual to familiarize yourself with all the installation requirements and procedures.

If you encounter any issues or if you have any questions on the operation of this product, please contact your nearest authorized Nakamichi dealer for assistance, or you may also contact us through our website or social media channels.

## Installation of your Product

In today's modern vehicles, it is very easy to cause damage to existing systems through improper installation. Please follow and scrutinize all wiring diagrams to ensure that you have connected everything in its proper place.

If you find yourself uncomfortable or unfamiliar with understanding the wiring and installation diagrams or testing instructions, do contact your nearest Nakamichi dealer to perform the installation for you.

## Safety Warnings and Considerations

- Clean only with a dry cloth or other similar materials.
- Install your product in a dry, well-ventilated location that does not interfere with your vehicle's safety equipment.
- Do not block any ventilation openings when installing this product.
- Do not mount the product in the engine compartment of your vehicle or in any areas of extreme heat such as mufflers, silencers, exhaust pipes or other heat producing apparatus.
- Securely mount the product so that it does not come loose in the event of a collision or as a result of repeated vibrations that might occur during normal operation.
- Installation of the apparatus must be done with great care to prevent damage to your vehicle's fuel lines, power, and other electrical wiring, hydraulic brake lines, and other systems. If possible, always visit your nearest Nakamichi dealer to perform the installation.

# YOUR SUBWOOFER

- Do not run any wiring outside or underneath the vehicle. Keep all wires inside the vehicle.
- Take the necessary precautions when making connections to the vehicle's battery to avoid any potential shock.
- Protect all system wires from sharp edges by carefully routing them, always use rubber grommets to protect wiring and cables whenever you are installing them through metal openings.
- Secure all wiring using cable ties or wire clamps to protect them from moving parts and sharp edges.
- This apparatus shall not be exposed to dripping or splashing, and no object filled with liquids, shall be placed on the apparatus.
- Refer all servicing to qualified service personnel. Servicing is required when the apparatus has been damaged in any way, such as the power input terminals are damaged, liquid has been spilled or objects have fallen into the apparatus, the apparatus has been exposed to rain or moisture, does not operate normally, or has been dropped.
- Exposure to high sound pressure levels may lead to permanent hearing loss. Take every precaution to protect your hearing.

## COMMON FAULTS & SOLUTIONS

Issues	Causes	Solutions
No sound.	1.Broken line. 2.No correct connection.	1.Check the cable. 2.Check the power of the 3.Connecting cable.
Distorted output.	1.Source level too high. 2.Gain of the amplifier too high.	1.Turn down the source level. 2.Turn down the gain of the amplifier.

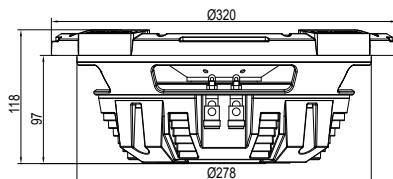
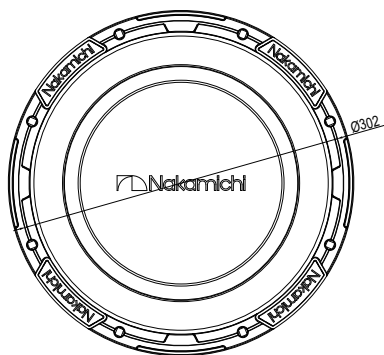
## ACCESSORY LIST

Check and identify the contents of your package:

1. Subwoofer x 1pc
3. Ø5×30mm Screw x 8pcs
2. User manual x 1pc
4. Mounting template x 1pc

# SPECIFICATIONS & DIMENSIONS

Model No.:	NSW-X1204D4
Nominal Diameter:	12" (31.3cm)
Mounting Depth:	3.82" (97mm)
N-Power:	400 watts
Peak Power:	4000 watts
Nominal Impedance:	$4\Omega + 4\Omega$
Frequency Response:	32 - 550 Hz
Sensitivity (SPL/1W/1m):	87±3dB
Free Air Resonance (Fo):	32 HZ
Suspension Compliance (Cms):	74.5 $\mu$ M/N
Moving Mass (Mms):	179.8 g
Mechanical "Q" (Qms):	44.15
Electrical "Q" (Qes):	1.136
Total Speaker "Q" (Qts):	0.904
Equivalent Volume (Vas):	28.9 Ltr
DC Resistance (Re):	$3.3\Omega + 3.3\Omega$
Effective Piston Area (Sd):	522.79CM <sup>2</sup>
Force Factor (BL):	8.446
Reference Efficiency (No):	0.20%
Voice Coil (V.C.):	Φ50.5mm,ASC
Magnet Mass:	52 Oz(1474g)
Net Mass (1pc):	Approx.4.8 kg



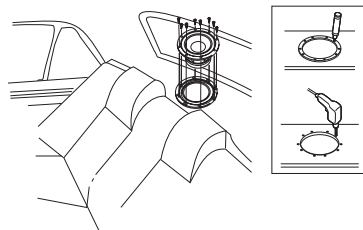
Unit: mm

# INSTALLATION

## Option 1: Mount on Rear Tray

You can mount the subwoofer on the rear tray.

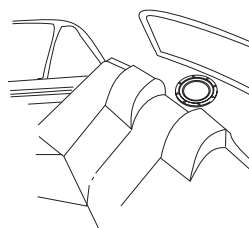
- Set the wiring firmly on the floor of the vehicle, taking the utmost care not to break wires while installing.



1. Turn off the car ignition key.

- If the power is on, the click noise generated by the connection may damage the subwoofer.

2. Cut out the mounting template from the packing box and paste it onto the location selected for mounting the subwoofer.



3. Mark the cut-off hole and the 8 bolt holes.

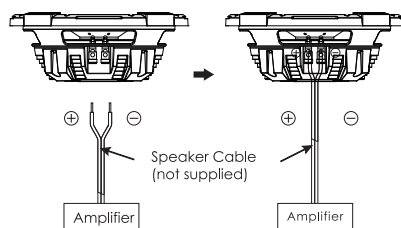
4. Cut out the marked area and drill the bolt holes.

5. Connect the subwoofer to the amplifier.

- The impedance of the units are related with how to connect. Make sure that the output impedance of the amplifier's speaker terminal is relevant with connection.

(Refer to "Wire Connection".)

- Consult the diagram. Be sure to connect corresponding terminals, i.e. "+" to "+" and "-" to "-". Connection with reversed polarity will degrade the quality of reproduction.

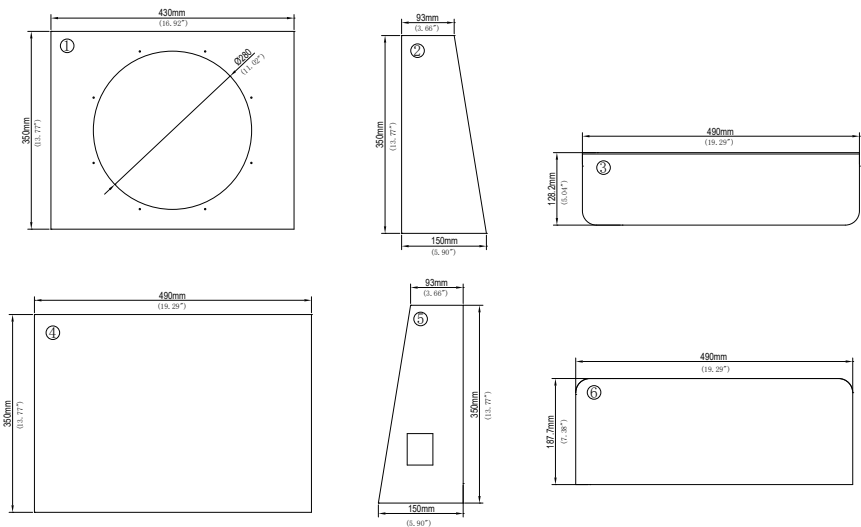
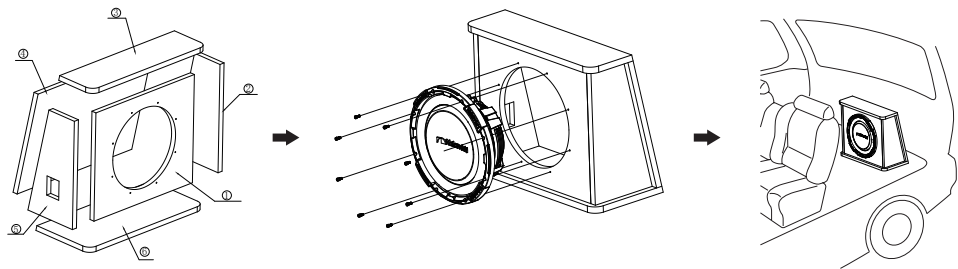


6. Mount the subwoofer into the rear tray with the supplied screws.

# INSTALLATION

## Option 2: Install in A Sealed Enclosure

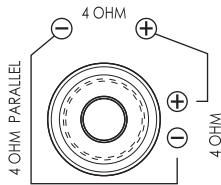
If the subwoofer cannot be mounted on the car, place it in a sealed enclosure. Recommended enclosures have been designed and thoroughly tested.



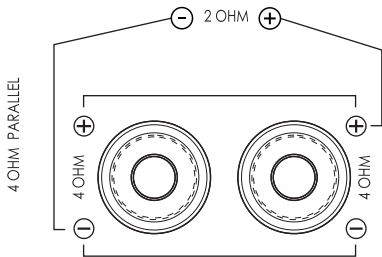
All boards thickness:15mm  
Connect the subwoofer to the amplifier.  
Install the subwoofer into the sealed enclosure with the supplied screws.

# WIRE CONNECTION

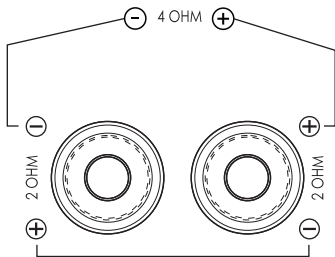
1PC SUBWOOFER 4 OHM



2PCS SUBWOOFER 4 OHM



2PCS SUBWOOFER 2 OHM







# 您的產品

---

## 尊敬的客戶：

感謝您購買了適用於您的音響系統的Nakamichi移動系統產品。

該產品的設計和製造符合Nakamichi的嚴格標準，可確保多年的音頻享受。為了獲得更佳性能，我們建議您由授權的Nakamichi經銷商安裝Nakamichi產品。

如果您想自行安裝此產品，我們建議您通讀本手冊以熟悉所有安裝要求和過程。

如果您遇到任何問題或對本產品的使用有任何疑問，請聯繫離您最近的Nakamichi授權經銷商以尋求幫助，或者您也可以通過我們的網站或社交媒體渠道與我們聯繫。

## 產品安裝

在當今的現代車輛中，很容易因安裝不當而損壞現有系統。請遵循並仔細檢查所有接線圖，以確保已正確連接所有部件。

如果您不熟悉接線和安裝，請與最近的Nakamichi經銷商聯繫以進行安裝。

## 安全警告和注意事項

- 僅用乾布或其他類似材料清潔。
- 將產品安裝在乾燥，通風良好的位置，不會干擾車輛的安全設備。
- 安裝本產品時，請勿阻塞任何通風口。
- 請勿將產品安裝在車輛的發動機艙內或任何過熱的地方，例如消聲器，消音器，排氣管或其他生熱設備。
- 牢固安裝產品，以免在碰撞或正常操作期間可能反復振動的情況下鬆動。
- 必須非常小心地安裝設備，以防止損壞車輛的燃油管路，電源和其他電線，液壓制動管路以及其他系統。如果可能，請始終與您最近的中道經銷商聯繫以進行安裝。
- 請勿在車輛外部或下方佈線。將所有電線保持在車內。
- 連接車輛電池時，請採取必要的預防措施，以免造成任何潛在的電擊。

# 您的產品

- 小心佈線以保護所有系統電線免受尖銳邊緣的傷害，無論何時通過金屬開口安裝它們，請始終使用橡膠墊圈來保護電線和電纜。
- 使用電纜紮帶或線夾固定所有佈線，以防止其受到運動部件和尖銳邊緣的傷害。
- 請勿將本設備暴露在滴水或飛濺的液體上，也不要在其上放置裝有液體的物品。
- 將所有服務交給合格的服務人員。當設備以任何方式損壞時，例如電源輸入端子損壞，液體濺入或有物體掉入設備，設備被雨淋或受潮，無法正常工作。
- 暴露於高聲壓級可能會導致永久性聽力損失。採取一切預防措施來保護您的聽力。

## 常見故障及解決方法

問題	原因	解決方案
無聲。	1.斷線。 2.沒有正確連接。	1.檢查電線。 2.檢查電源。 3.連接電線。
失真輸出。	1.輸出過大。 2.放大器增益過高。	1.調小輸出。 2.降低放大器的增益。

## 包裝內物品

檢查並識別包裝中的物品：

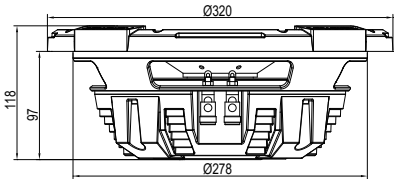
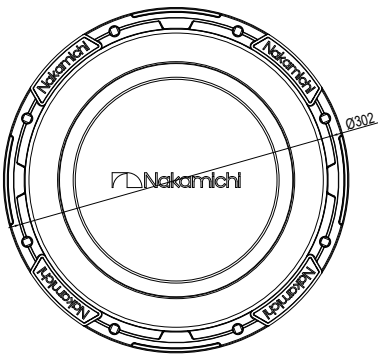
- 1.雙音圈揚聲器 (x1個)

2.說明書 (x1本)
- 3.螺絲Ø5x30mm (x8顆)

4.安裝模板 (x1個)

# 產品規格&尺寸

型號：	NSW-X1204D4
揚聲器類型：	12" (31.3cm)
安裝深度：	3.82"(97mm)
額定功率：	400 watts
最大峰值功率：	4000 watts
標準阻抗：	4Ω + 4Ω
頻率範圍：	32 - 550 Hz
靈敏度 (SPL/1W/1m)：	87±3dB
自由聲壓：	32 HZ
順性力：	74.5 uM/N
震動質量：	179.8 g
機械品質因數：	44.15
電子品質因數：	1.136
總體品質因數：	0.904
等效容積：	28.9 Ltr
直流電阻：	3.3Ω + 3.3Ω
有效震動面積：	522.79CM^2
驅動力因數：	8.446
有效轉換率：	0.20%
音圈規格：	Φ50.5mm,ASC
磁鋼重量：	52 Oz(1474g)
淨重 (1個):	約4.8 kg



單位: 毫米

# 安裝方式

## 方案1:安裝在後托盤上

你可以將雙音圈揚聲器安裝在後托盤上。

- 將電線牢固地放置在車輛地板上，安裝時要非常小心，不要弄斷電線。

### 1. 關閉汽車的點火鑰匙。

- 如果電源為接通狀態，則電源連接所產生的震動聲可能會對雙音圈揚聲器造成損壞。

### 2. 從包裝盒中剪下安裝模板，並將其粘貼到選定的雙音圈揚聲器安裝位置上。

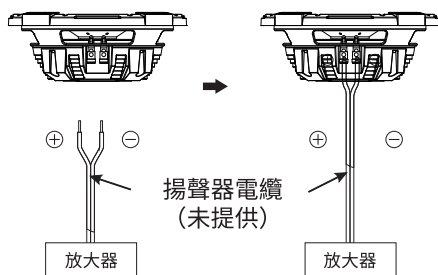
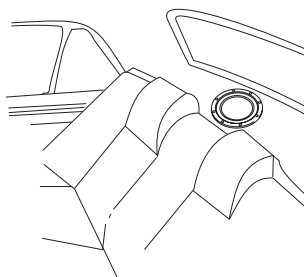
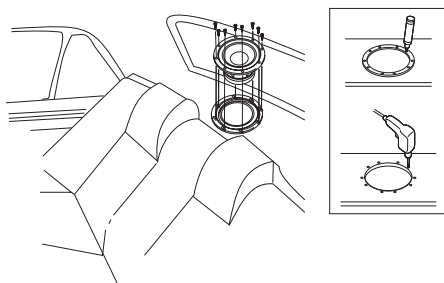
### 3. 標記好定點孔和8個螺栓孔，並鑽開螺栓孔。

### 4. 切割出標記區域，並鑽螺栓孔。

### 5. 將雙音圈揚聲器連接到放大器。

- 單元的阻抗與如何連接有關。確保放大器揚聲器端子的輸出阻抗與連接有關。（請參閱“導線連接”。）
- 參考圖。一定要連接相應的端子，即“+”連接到“+”，“-”連接到“-”。反極性連接會降低複製質量。

### 6. 將雙音圈揚聲器安裝到後托盤中。用提供的螺絲。

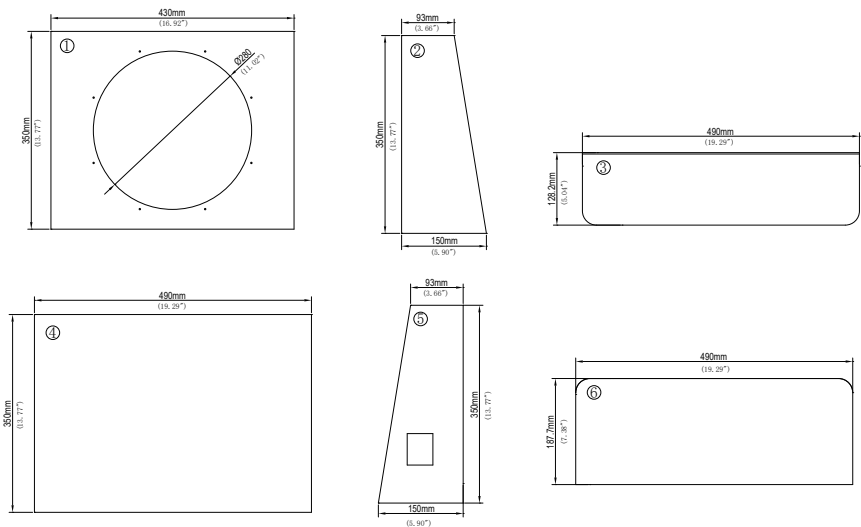
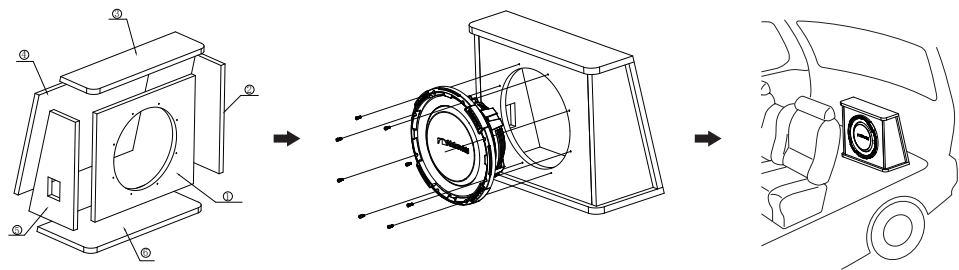


# 安裝方式

## 方案2:安裝在密封外箱中

如果雙音圈揚聲器無法安裝在汽車上，請將其放置在密封的外箱中。

推薦的外箱經過設計和全面測試。



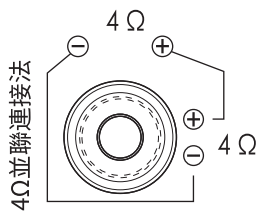
所有板子厚度:15mm

將雙音圈揚聲器連接到放大器。

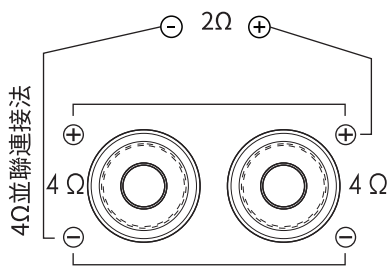
用隨附的螺絲將雙音圈揚聲器安裝到密封外箱中。

# 導線連接

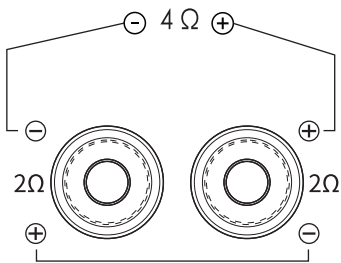
4Ω雙音圈揚聲器 x 1個



4Ω雙音圈揚聲器 x 2個



2Ω雙音圈揚聲器 x 2個





CONNECT WITH US ONLINE TO EXPLORE NAKAMICHI'S COMPLETE RANGE,  
INSTRUCTIONS & SOFTWARE DOWNLOADS AND WARRANTY REGISTRATION.

[WWW.NAKAMICHICARAUDIO.COM](http://WWW.NAKAMICHICARAUDIO.COM)



[nakamichi.global](https://www.facebook.com/nakamichi.global)



[nakamichi.caraudio](https://www.instagram.com/nakamichi.caraudio)