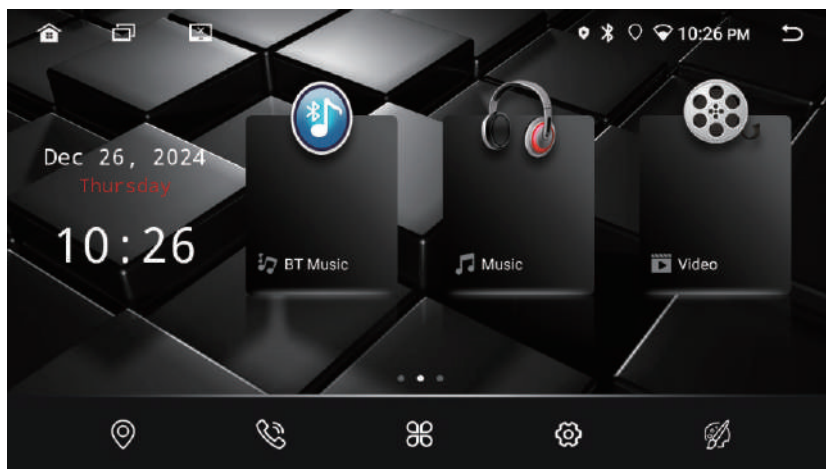




NAM5710

User Manual



ANDROID MULTIMEDIA RECEIVER

CONTENTS

Warning & Precation.....	1 EN
Accessory List.....	2 EN
Gps Antenna Installation.....	2 EN
Product Features.....	3 EN
Wiring Connection.....	4 EN
Panel Operation.....	5 EN
Panel Operation.....	6 EN
Camera Settings.....	6 EN
Phone Connection.....	7 EN
Radio Operation.....	8 EN
Bluetooth Operation.....	9 EN
Playback Operation.....	10 EN
EQ Operation.....	11 EN
Steering Wheel Learning.....	11 EN
Settings.....	12 EN
Wifl Connection.....	12 EN
Volume Settings.....	12 EN
Microphone Settings.....	12 EN
Button Backlight Settings.....	12 EN
Navigation Settings.....	13 EN
Languages Settings.....	13 EN
System Reset.....	13 EN
Can Bus Settings.....	13 EN
Trouble Shooting.....	14 EN
360 panoramic operation	14 EN
Speaker wiring warning	14 EN
Trouble Shooting.....	15 EN
Specification.....	16 EN

WARNING & PRECATION

To avoid risk of serious injury or possible violation of laws, please read the following thoroughly before installation or connecting.



This symbol means important ban. Failure to heed them can result in serious injury or death.



This symbol mean important instructions. Failure to heed them can result in injury or material property damage.



Having the wiring and installation done by expert. The wiring and installation of this unit requires special technical skill and experience. To ensure the safety, always connect the dealer where you purchased this product to have the work done.



Do not watch video or operate the unit while driving.



Be sure to use specified accessory parts and install them securely.



Do not install in location which may hide vehicle operation, such as steering wheel or gearshift or cover of airbag .



Be sure to use the correct ampere rating when replace fuses. Failure to do so may result in fire of electric shorts.



Do not touch antenna or any plugs while in thunder storm to avoid electric shock.



Be sure to disconnect the cable from the negative battery terminal while installation. Failure to do so may result in electric shock or injury due to electrical shorts.



Do not damage wiring. Failure to do so may result in electric shock or fire due to electrical shorts.



Be sure to connect 'Parking Break' lead so that the driver can not watch the video unless the vehicle is stopped. Failure to do so may result in traffic accident or violation of laws.




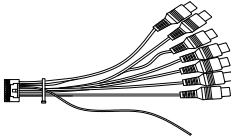

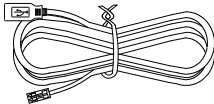
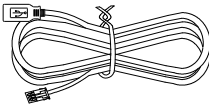
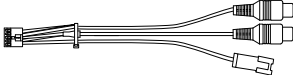

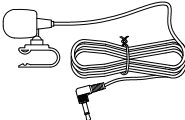
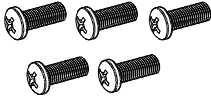

Do not install in locations with in high moisture or dusty. Moisture or dusty that penetrate into this unit may result in product failure.



Be sure to check the installation of antenna regular. Antenna dropping may result in an accident while the vehicle is running.

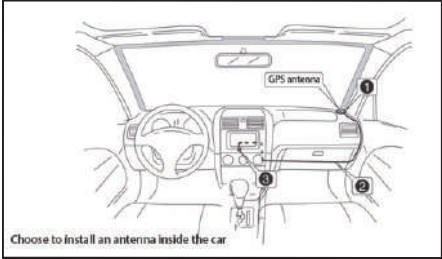
ACCESSORY LIST

Please check the following accessories after opening the package

<div>Power Cable x1</div> <div></div>	<div>20P RCA Cable x1</div> <div></div>	<div>WIFI/BT/Camera Cable x1</div> <div></div>
<div>4P USB Cable x1</div> <div></div>	<div>6P USB Cable x1</div> <div></div>	<div>8P RL/RR Cable X1</div> <div></div>
<div>GPS Antenna x1</div> <div></div>	<div>Microphone x1</div> <div></div>	<div>Installation Screw (3x8)x5</div> <div></div>
<div>User Manual x1</div> <div></div>	<div>Notes:</div> <div>The above accessories are applicable to 9 "and 10" , Other models ,accessories may vary, please refer to the actual product.</div>	

GPS ANTENNA INSTALLATION

GPS Antenna Diagram

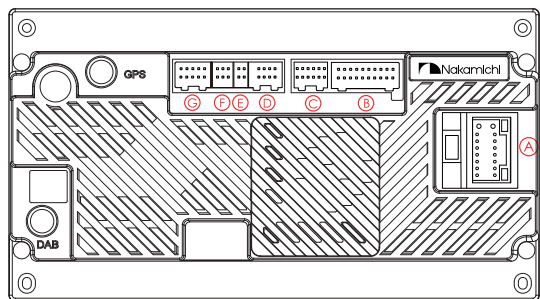


1. The GPS antenna can be mounted inside the vehicle, such as on an instrument platform, or outside the vehicle, such as on the roof.
2. GPS antennas must have an open "field of view" facing the sky. If the vehicle glass is equipped with explosion proof film, heat insulation film, may greatly reduce the strength of GPS antenna to receive satellite signals; In this case, it is recommended to install the GPS antenna on the outside of the vehicle.

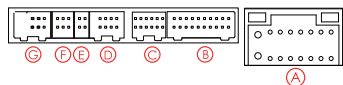
PRODUCT FEATURES

- HD android multimedia receiver
- 8 core A55 CPU
- Support 360 panorama
- Support Phonelink
- Support bass boost
- Built-32 band EQ
- Support 5G Wifi
- 4. 1 channel Pre-Output
- Built-in Bluetooth
- Support Bluetooth music playback
- Support AHD1080P Camera input
- Support lossless music
- Support 1080P video playback
- Support MP3/WMA/AAC/FLAC audio playback
- Support H264/WMV/DIVX/FLV video playback
- 1 Video input,2 Audio input
- Support subwoofer output
- Support subwoofer volume control
- Maximum power:4x50W
- Support steering wheel control
- High sensitivity FM/AM, support RDS Presets 18 FM,12AM

WIRING CONNECTION

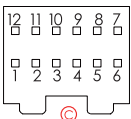
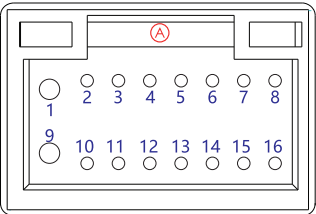


Interface Introduction



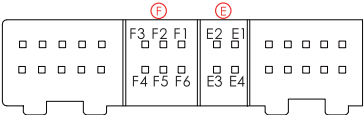
- A--Power
- B--Input/Output
- C--360 Panorama
- D--RL/RR+Can bus
- E--4P USB
- F--6P USB
- G--Camera

A--Power			
Pin	Name	Pin	Name
A1	Ground Wire	A9	Battery Wire
A2	Ignition Wire	A10	Lamp Control Wire
A3	Reverse Wire	A11	SWC2
A4	SWC1	A12	Amplifier Control Wire
A5	Front Right Speaker-	A13	Rear Left Speaker-
A6	Front Right Speaker+	A14	Rear Left Speaker+
A7	Front Left Speaker-	A15	Rear Right Speaker+
A8	Front Left Speaker+	A16	Rear Right Speaker-



B--Input/Output		
Label	Color	Name
AUX Video Input	Yellow	Video Input
AUX Input L	White	Audio Left Input
AUX Input R	Red	Audio Right Input
FL Output	White	Audio Front Left Output
FR Output	Red	Audio Front Right Output
Subwoofer Output	Blue	Audio Subwoofer Output
MIC	Black	External Microphone Port
AMP output+12V	Pink	Amplifier Control Wire

C--360 Panorama			
Pin	Name	Pin	Name
C1	Power+ 5V	C7	Right Turn Detection
C2	Ground	C8	Front Camera Input
C3	Ground	C9	Right Camera Input
C4	Ground	C10	Rear Camera Input
C5	Ground	C11	Left Camera Input
C6	Left Turn Detection	C12	Power+ 5V



D--RL/RR+Can bus		
Label	Color	Name
RL Output	White	Audio Rear Left Output
RR Output	Red	Audio Rear Right Output
MCU TX	Orange	Canbus TXD Wire
MCU RX	Orange/White	Canbus RXD Wire

F--6P USB	
Pin	Name
F1	USB_DP1
F2	USB_DM1
F3	USB_DP2
F4	USB_DM2
F5	GND
F6	USB_5V

E--4P USB	
Pin	Name
E1	USB_DP0
E2	USB_DM0
E3	GND
E4	USB_5V

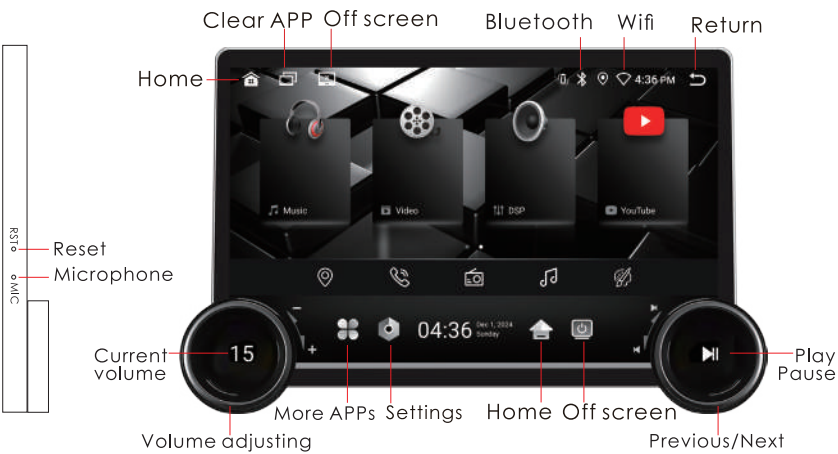
G--Camera		
Label	Color	Name
BRAKE	White	Wifi/BT Antenna
Reverse Camera	Brown	Brake Detection Wire
Reverse Camera	Yellow	Back Camera Input
Reverse+12V OUT	Red	Wifi/BT Antenna

PANEL OPERATION

• NAM5710-A9, NAM5710-AX

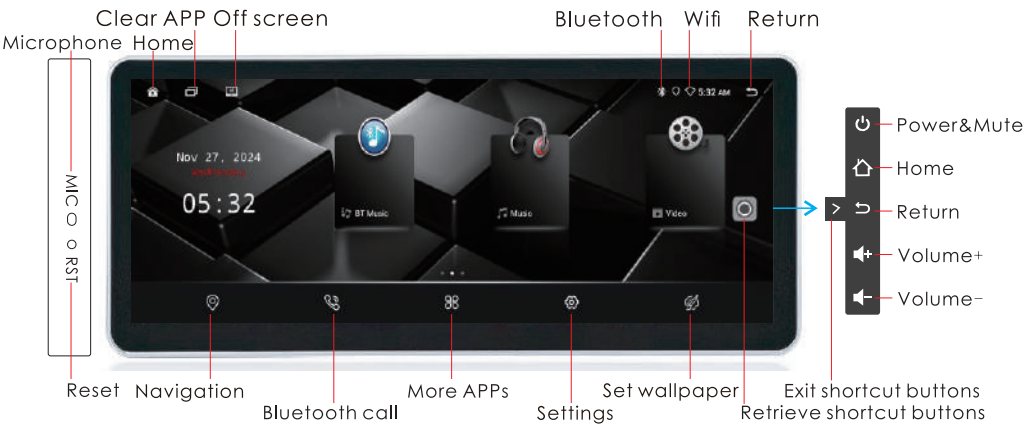


• NAM5710-A11.5



PANEL OPERATION

● NAM5710-A12.3



CAMERA SETTINGS

No Signal

Press and hold the screen for more than 3 seconds.

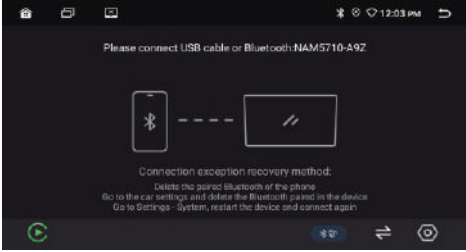
Image mirror	<input checked="" type="radio"/> No mirror <input type="radio"/> Mirror left and right <input type="radio"/> Mirror up and down <input type="radio"/> Mirror All
Image format	AHD720P25
Display parameters	
Reversing trace	<input checked="" type="radio"/> off <input type="radio"/> Static <input type="radio"/> Dynamic
Show warning message	<input checked="" type="radio"/> off <input type="radio"/> On
Radar	<input type="radio"/> Off <input checked="" type="radio"/> On

In reverse mode state, Press and hold the screen for more than 3 seconds to enter camera settings.

Notice:
The settings are inconsistent with the camera parameters, there may be no image.

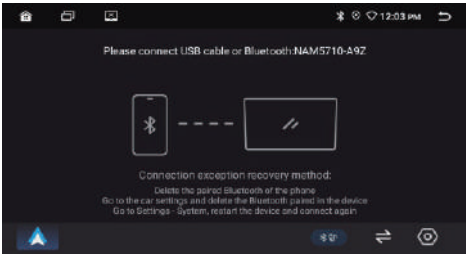
PHONE CONNECTION

ApplePlay Connection



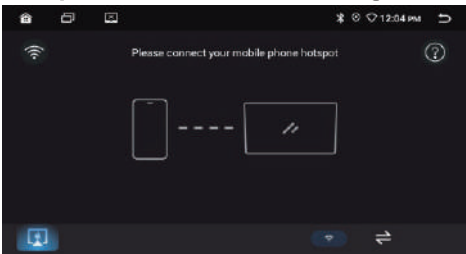
1. Press [🏠] to enter the homepage.
2. Click [ApplePlay] to enter the ApplePlay interface.
3. Please connect your phone with bluetooth.

Androidauto Connection



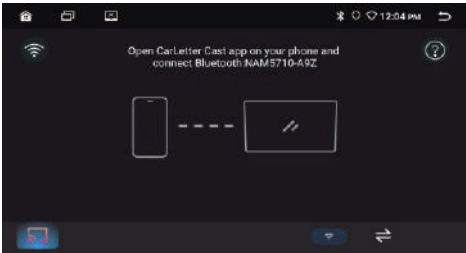
1. Press [🏠] to enter the homepage.
2. Click [Android Auto] to enter the Android Auto interface.
3. Please connect your phone with bluetooth.

iOS phone Screen Mirroring



1. Click [🏠] to select [📶].
2. Click [Airplay] to enter the Airplay interface.
3. Open your phone hotspot.
4. Product model connect to mobile WIFI.
5. Pull down the iPhone, click [📶] to enter the screen mirroring, and select Product model.

Androidphone Screen Mirroring

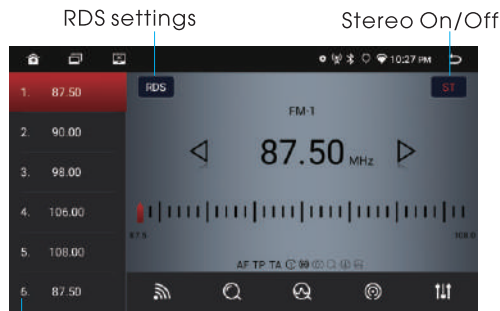


1. Click [🏠] to select [📶].
2. Click [Android Link] to enter the Android Link interface.
3. Download CarLetter Cast on your phone and install.
4. Product model connects to bluetooth, open the app on your phone.

RADIO OPERATION

Radio Interface

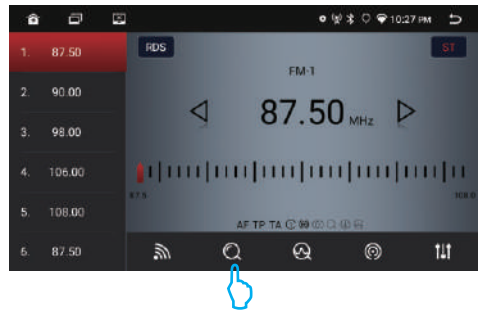
- 1.Press [] to enter the homepage. 2.Click [Radio] to enter the radio interface.



- ◀ Seek Down
- ▶ Seek Up
- 📶 Band Selection FM/AM
- 🔍 Automatic Search
- 📻 Station browse
- 📶 Dx/Local Selection
- 🔊 EQ Settings

- Click to select a station
Hold for more than 2 seconds to store the station

Automatically Search | Manual Search



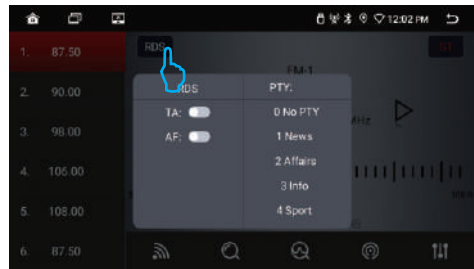
Automatically search

Click [Q] to enter automatic search and storage.

Manual search

Click [<] or [>] to the manual search

RDS Settings



Click [RDS] to enter the RDS Settings.

RDS Function

RDS will allow you to display information such as traffic status, radio station name and more. The unit can automatically switch to the strongest station based on the similar program.

BLUETOOTH OPERATION

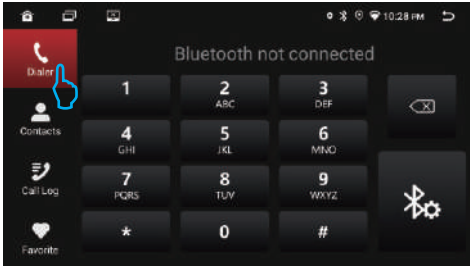
- 1.Press [🏠] to enter the homepage.
- 2. Click to [📶] to enter the bluetooth interface.

Bluetooth Pairing Connection

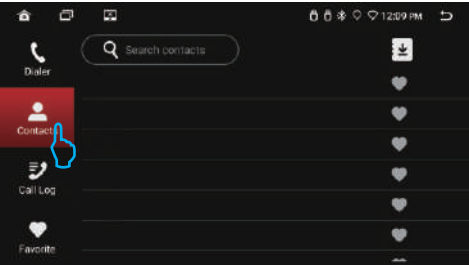


- Bluetooth connected
- The first time pair mobile phone with AV receiver, please follow below steps:
- 1.Turn on your phone's Bluetooth to search Device name: Product model
 - 2.Click [Product model] to connect.

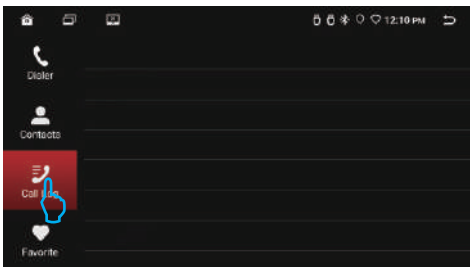
Bluetooth Call



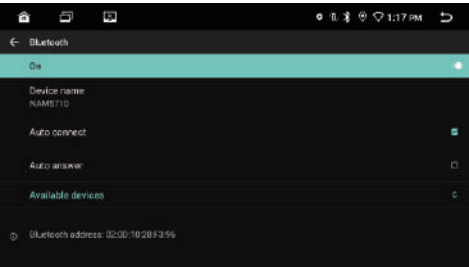
Phone Book



History Call Record



Bluetooth Settings



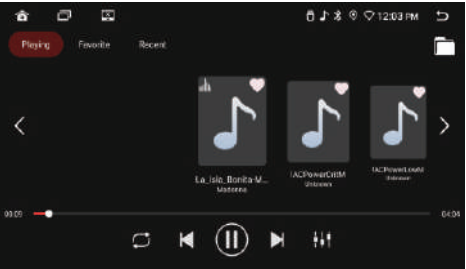
- 1.Press [🏠] to enter the homepage.
- 2.Press [⚙️] to select [Bluetooth] enter the bluetooth settings interface.







PLAYBACK OPERATION

Music Playback

1.Press [] to enter the homepage. 2.Click [Music] to enter the music playback.

Music playback interface

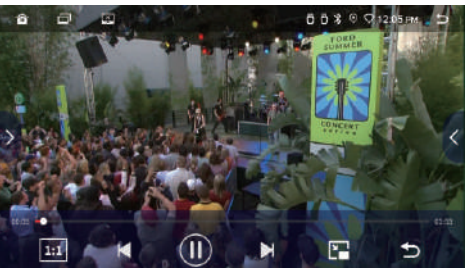








- < Page Up
- > Page Down
-  Folders
-  Repeat
-  Previous Track
-  Play/Pause
-  Next Track
-  EQ Settings

Video Playback


1.Press [] to enter the homepage. 2.Click [Video] to enter the video playback.

Video playback interface

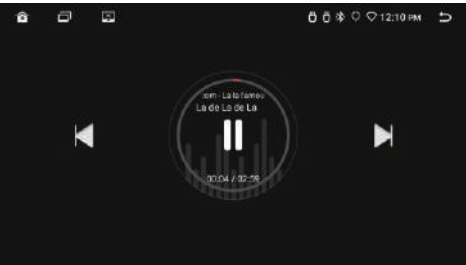





- > Playback device
- < Playlist
-  Image size switching
-  Previous Video
-  Play/Pause
-  Next Video
-  Picture in Picture
-  Return

Bluetooth Music Playback

1.Press [] to enter the homepage.
2.Click [BT Music] to enter the bluetooth music playback.

Bluetooth Music Playback interface

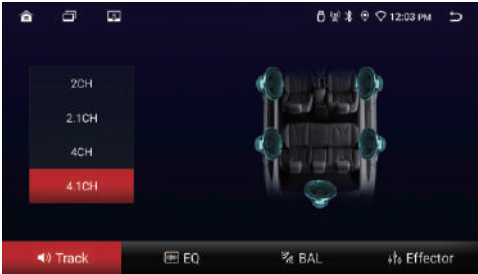


-  Previous Track
-  Play/Pause
-  Next Track

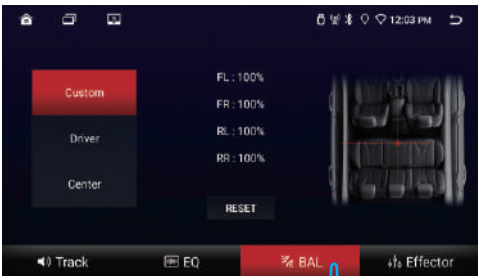
EQ OPERATION

1.Press [] to enter the homepage. 2.Click [EQ] to enter the EQ Settings Interface.

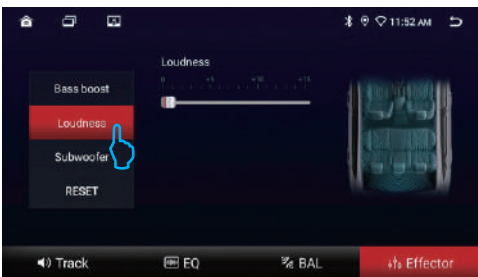
Track Settings



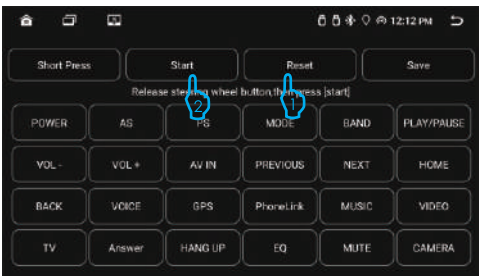
Balance Settings


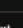


Loudness Settings

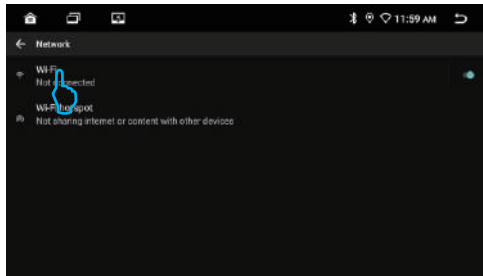


STEERING WHEEL LEARNING



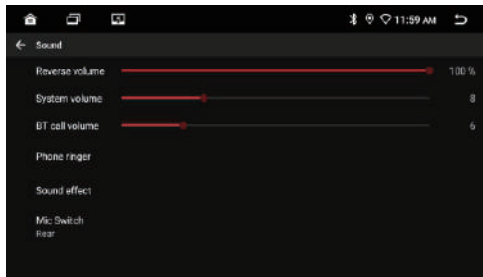
- 1.Press [] to enter the homepage.
- 2.Click [] to select [SWC].
- 3.Release steering wheel button,the press [Star].
- 4.Touch the function on the display.
- 5.Push the button on the steering wheel.
- 6.Key learning succeeds, proceed to the next key operation.

WIFI Connection



- 1.Press [🏠] to enter the homepage.
- 2.Click [⚙️] to select [Network].
- 3.Click [Wi-Fi] to search wifi.
- 4.Select WIFI and enter password to connect.

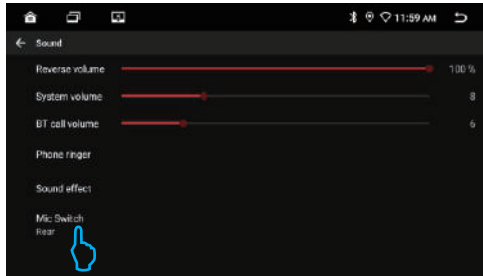
Volume Settings



- 1.Press [🏠] to enter the homepage.
- 2.Click [⚙️] to select [Sound].

Remark:
Support Reverse volume, System Volume, Bluetooth call volume Settings.

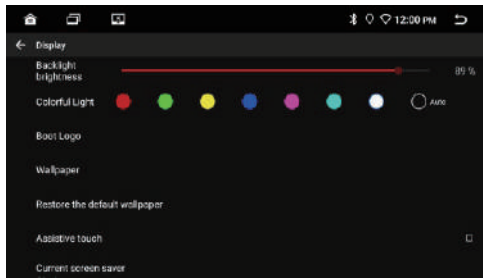
Microphone settings



- 1.Press [🏠] to enter the homepage.
- 2.Click [⚙️] to select [Sound].
- 3.Click [Mic Switch] to setup.

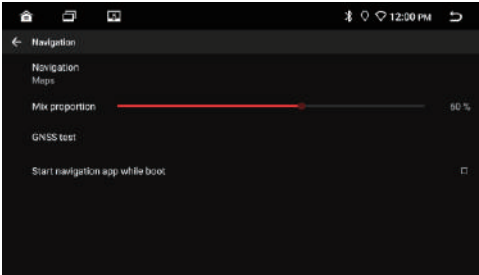
Note:
Set the microphone to the correct.
Set it incorrectly may result in silence or poor call quality.

Button backlight settings



- 1.Press [🏠] to enter the homepage.
- 2.Click [⚙️] to select [Display].
- 3.Select the light color for the Colorful Light strip.

Navigation settings

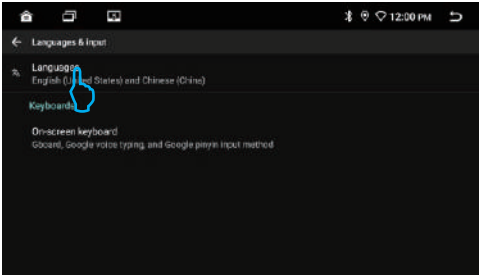


- 1.Press [🏠] to enter the homepage.
- 2.Click [⚙️] to select [Navigation].

Remark:

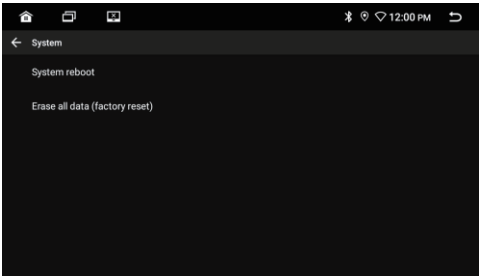
- 1.Support navigation map selection, such as iGO, google map,waze.
- 2.Support GPS mixing.

Languages Settings



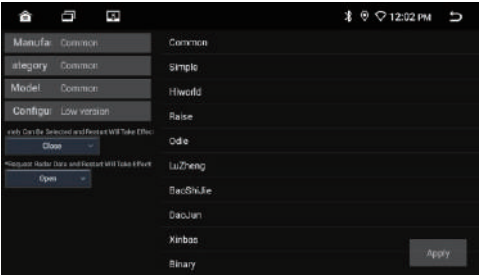
- 1.Press [🏠] to enter the homepage.
- 2.Click [⚙️] to select [Languages&input]
- 3.Click [Languages] to enter the Language setting interface.
- 4.Click [+]add the required language.
- 5.Drag the required language to 1.

System Reset



- 1.Press [🏠] to enter the homepage.
- 2.Click [⚙️] to select [System].

Can Bus Settings

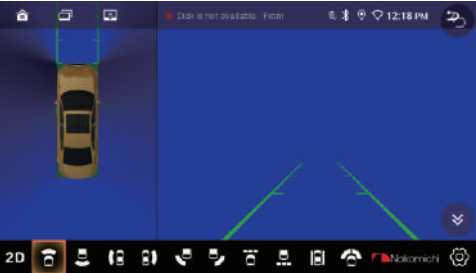


- 1.Press [🏠] to enter the homepage.
- 2.Click [⚙️] to select [Factory Mode].
Password is 1948.
- 3.Click [1Vehicle] to select [Automotive type].
- 4.Click [Manufa] to select canbus brand.
- 5.Click[Category] to select car brand.
- 6.Click[Model] to select vehicle model.
- 7.Click[Configu] to select car configure.
- 8.Click[SURE] to restart, set successful.

360 PANORAMIC OPERATION

1.Press [🏠] to enter the homepage. 2.Click [AVM] to enter the 360 panoramic interface.

2D Mode Interface



- | | |
|-----------------|---------------------|
| 2D/3D Switch | Right rear wheel |
| Front view | Front view |
| Rear view | Rear view |
| Right view | Left and right view |
| Left view | Front wheel |
| Left rear wheel | Settings |

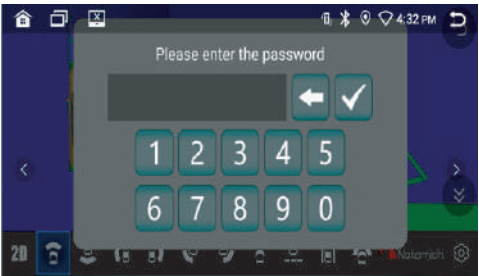
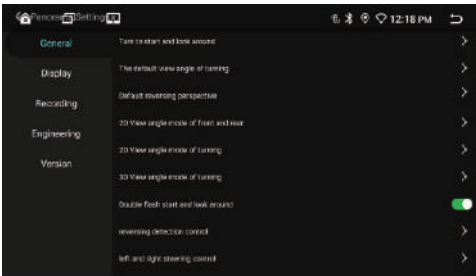
3D Mode Interface



- | | |
|-----------------|---------------------|
| 2D/3D Switch | Right rear wheel |
| Front view | Left front view |
| Rear view | Right front view |
| Right view | Left and right view |
| Left view | Round view |
| Left rear wheel | Settings |

360 Panoramic Settings

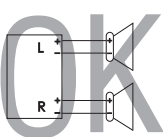
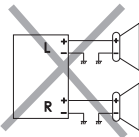
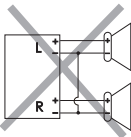
Click [⚙️] to enter the 360 panoramic settings.




Password is 8888.

SPEAKER WIRING WARNING

Do not connect the speaker leads of the power cord to the car battery; other wise,the unit will be serously damaged. BEFORE connecting the speaker leads of the power cord to the speaker schcek the speaker wiring in your car.



TROUBLE SHOOTING

Not turn on	A fuse is blown	Replace fuse
	Cable connection problem	Reconnect the cable
Radio signal is weak	Occluded by objects	Move to another location
	Antenna connection problem	Rewire the radio antenna
GPS signal is weak	Occluded by objects	Move to another location
	Antenna connection problem	Rewire the GPS antenna
Wifi signal is weak	Wi-fi antenna not connected	Plug in the WIFI antenna In position F
	Too far	Change position
Bluetooth signal that weak	BT antenna not connected	Plug in BT antennas In position F
	Too far	Change position
System stuck	Too many apps that opened	Click to [] close application
	Insufficient storage space	Uninstall the app or clear the storage space
	Systems crash	Push the RST panel button With a pointed object
Bluetooth telephone is not good	Microphone is too far away	Lean into the microphone
		Change microphone position
Music can't be played	Unsupported audio format	Change the music
No video	Brake cable is not connected	Reconnect the brake cable
Unable to play this video	Unsupported video format	Change the video or convert the format
Mirrorphone no sound	Bluetooth is not connected	Bluetooth connection

SPECIFICATION

General

Operation Voltage: 14.4V(10.5-16V)
Operating Temperature: -10°C - +60°C
Storage Temperature: -20°C - +70°C

System

Operating system : NK13.0
RAM : 2GB | 4GB | 6GB
Storage: 32GB | 64GB | 128GB

Bluetooth

Communication System: BT5.0+EDR
Output: BT Standard Power 2 Class
Max Communication Range: 5m
Frequency Band: 2.4GHz

Radio

FM Frequency Range: 87.5-108.0MHZ
AM Frequency Range: 522-1620KHZ

USB Interface

USB: Readable/ Chargeable

Audio

Max Power: 4X50W
Front Output(V): 4V/10KΩ
Pre-output impedance: ≤600Ω
Speakers impedance: 4-8Ω

TFT Screen Item

NAM5710-A9: 9inch, 1280x720IPS
NAM5710-AX: 10inch, 1280x720IPS
NAM5710-A11.5: 11.5inch, 2000x1200IPS
NAM5710-A12.3: 12.3inch, 1920x720IPS
Contrast ratio: 500
Brightness: 500nit

Video

External Video Input System:
NTSC/PAL/SECAM
External Video Input: 1VP-P/75Ω

Video Format

H264/ MP4/ AVI/ MKV/ FLV

Audio Format

MP3/APE/AAC/FLAC

Note:

Specification and design; functions and features; unit illumination; colour and display segment are subject to change without prior notice. Photos and drawings on gift box or operation manual might be varied from the exact unit. Depends on the input devices operation might be varied from the operation manual described.



CONNECT WITH US ONLINE TO EXPLORE NAKAMICHI'S COMPLETE RANGE,
INSTRUCTIONS & SOFTWARE DOWNLOADS AND WARRANTY REGISTRATION.

WWW.NAKAMICHICARAUDIO.COM



[nakamichi.global](https://www.facebook.com/nakamichi.global)



[nakamichi.caraudio](https://www.instagram.com/nakamichi.caraudio)