

Nakamichi's NSF series speakers are designed to provide for a clean and seamless sound performance, with selected materials that work together, enabling you to truly hear and feel the music in your vehicle.



Composite Polypropylene Cone
Our treated composite polypropylene cone is extremely rigid but still lightweight, allowing it to reproduce even deeper and more powerful bass notes.



IIR Surround
IIR surround for flexibility and durability in extreme conditions within your vehicle.



25mm Silk Dome Tweeter
Our silk dome tweeter has been engineered to be lighter, enhancing sound reproduction efficiency while maintaining the same volume level as well as to ensure the smoothest highs.

Specifications

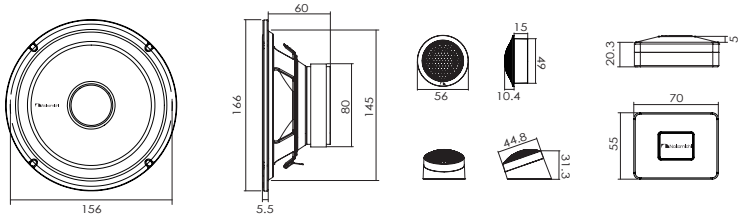
Speaker Type:	6.5" (16.6cm)	Mounting Depth:	>2.3" (6.0cm)	Impedance:	4Ω
N-power:	35 Watts	Sensitivity (dB/W/m):	88±3dB	Voice Coil:	ASV 25.5mm
Peak Power:	245 watts	Frequency Response:	55Hz - 20k Hz	Magnet Mass:	10.68 Oz (302g)
				Net Mass (1pr):	Approx.1.5kg

NSF-CS656

6.5" 2-WAY COMPONENT SPEAKER

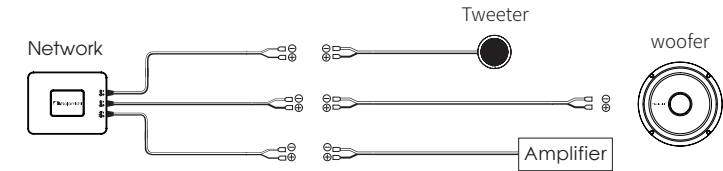
ALTAVOZ COMPONENT DE 2 VÍAS DE 6.5" / 6.5"兩路分體揚聲器
6.5" 2-ПОЛОСНЫЙ КОМПОНЕНТНЫЙ ДИНАМИК / ENCEINTE COMPONENT 2 VOIES 6.5"

Dimensions (unit: mm)

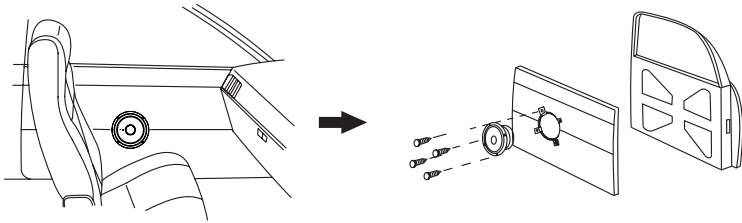


Installation

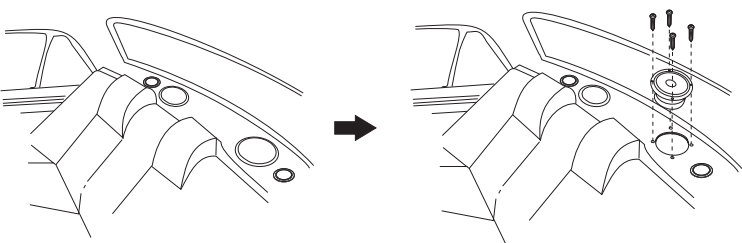
- Turn off the car ignition key.
 - If the power is on, the click noise generated by the connection may damage the speakers.
- Cut out the mounting template from the packing box.
- Paste the template on the location selected for mounting the speaker.
- Mark the cut-off hole and the 4 bolt holes. (Fig.1)
- Cut out the marked area and drill the bolt holes. (Fig.2)
- Strip the speaker wires and connect them to the amplifier.
 - Consult the diagram below. Be sure to connect corresponding terminals, i.e. "+" to "+" and "-" to "-". Connection with reversed polarity will degrade the quality of production.
 - Connect the provided speaker cord to the speaker terminal while holding the lower portion of the speaker terminal.



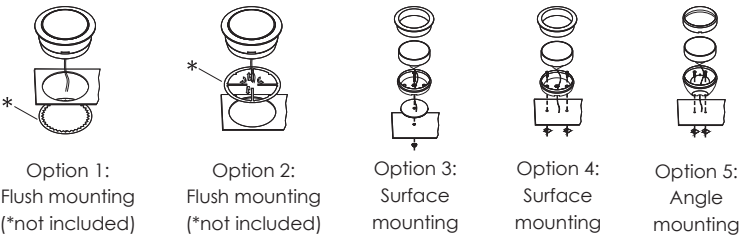
7. Mount on the speaker as shown below.



8. Mount on real tray.



Mount the Tweeter



Mount the Network

- Find a proper location to mount the networks.
- Mount the networks onto the car with the supplied screws.

What's In The Box

- | | |
|-------------------|-------------------------|
| 1. Woofer x 2pcs | 4. Angle Abapter x 2pcs |
| 2. Tweeter x 2pcs | 5. Ø4x25mm Screw x 8pcs |
| 3. Network x 2pcs | 6. Ø3x16mm Screw x 2pcs |