

NSI-NB893

User Manual



8x9" MID-BASS SPEAKER

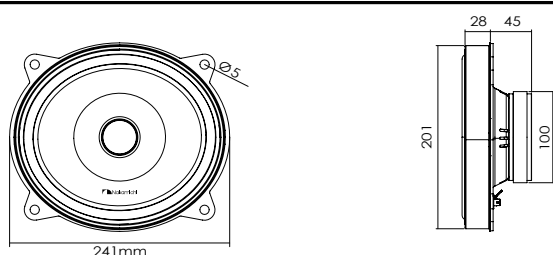


CONNECT WITH US ONLINE TO EXPLORE NAKAMICHI'S COMPLETE RANGE, INSTRUCTIONS & SOFTWARE DOWNLOADS AND WARRANTY REGISTRATION.

WWW.NAKAMICHIcaraudio.COM

f nakamichi.global @ nakamichi.caraudio

DIMENSIONS (UNIT: MM)



SPECIFICATIONS

Speaker Type:	8x9" (201x241cm) 2-way	Frequency Response:	45Hz-7.5kHz
Mounting Depth:	>1.77" (45mm)	Impedance:	4Ω
N-power (1pr):	80 watts (1pc) , 160 watts (1pr)	Voice Coil:	ASV Φ38.55mm
Peak Power:	560 Watts (1pc) , 1120 watts (1pr)	Magnet Mass:	15.23 OZ (432g)
Sensitivity(dB/W/m):	88±3 dB	Net Mass (1pr):	Approx. 3.0kg (±0.3kg)

INSTALLATION

OPTION 1 : MOUNT ON THE REAR TRAY

You can mount the speakers on the rear tray of your car.

- Make sure that nothing obstructs around the mounting location of the rear tray.
 - A hole for mounting may already be cut out of the inner panel of the rear tray. If so, you need to modify the board only.
 - Ensure that the speaker terminals, frame or magnet do not interfere with any inner parts, (such as the window), etc. Also ensure that the speaker grille does not touch any inner fittings, such as the window cranks, door handles, arm rests etc.
1. Turn off the car ignition key.
 - If the power is on, the click noise generated by the connection may damage the speakers.
 2. Cut out the mounting template from the packing box.
 3. Paste the template on the location selected for mounting the speaker.
 4. Mark the cut-off hole and the 4 bolt holes. (Fig.1)
 5. Cut out the marked area and drill the bolt holes. (Fig.2)

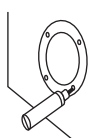


Fig.1

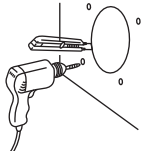


Fig.2

YOUR SPEAKER

Dear Customer,

Congratulations on purchasing our Nakamichi mobile system product for your sound system.

This product has been designed and manufactured to Nakamichi's exacting standards to ensure many years of audio enjoyment. For the best performance, we recommend that you have your Nakamichi product installed by an authorized Nakamichi dealer.

If you would like to install this product on your own, we recommend for you to go through this manual to familiarize yourself with all the installation requirements and procedures.

If you encounter any issues or if you have any questions on the operation of this product, please contact your nearest authorized Nakamichi dealer for assistance, or you may also contact us through our website or social media channels.

Installation of Your Product

In today's modern vehicles, it is very easy to cause damage to existing systems through improper installation. Please follow and scrutinize all wiring diagrams to ensure that you have connected everything in its proper place.

If you find yourself uncomfortable or unfamiliar with understanding the wiring and installation diagrams or testing instructions, do contact your nearest Nakamichi dealer to perform the installation for you.

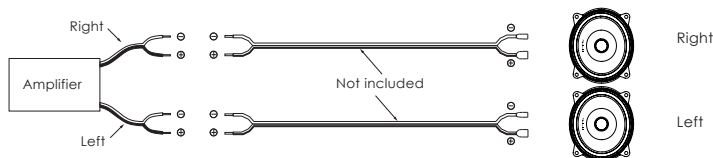
Safety Warnings and Considerations

- Clean only with a dry cloth or other similar materials.
- Install your product in a dry, well-ventilated location that does not interfere with your vehicle's safety equipment.
- Do not block any ventilation openings when installing this product.
- Do not mount the product in the engine compartment of your vehicle or in any areas of extreme heat such as mufflers, silencers, exhaust pipes or other heat producing apparatus.
- Securely mount the product so that it does not come loose in the event of a collision or as a result of repeated vibrations that might occur during normal operation.
- Installation of the apparatus must be done with great care to prevent damage to your vehicle's fuel lines, power, and other electrical wiring, hydraulic brake lines, and other systems. If possible, always visit your nearest Nakamichi dealer to perform the installation.
- Do not run any wiring outside or underneath the vehicle. Keep all wires inside the vehicle.
- Take the necessary precautions when making connections to the vehicle's battery to avoid any potential shock.
- Protect all system wires from sharp edges by carefully routing them, always use rubber grommets to protect wiring and cables whenever you are installing them through metal openings.
- Secure all wiring using cable ties or wire clamps to protect them from moving parts and sharp edges.
- This apparatus shall not be exposed to dripping or splashing, and no object filled with liquids, shall be placed on the apparatus.
- Refer all servicing to qualified service personnel. Servicing is required when the apparatus has been damaged in any way, such as the power input terminals are damaged, liquid has been spilled or objects have fallen into the apparatus, the apparatus has been exposed to rain or moisture, does not operate normally, or has been dropped.
- Fuses shall be replaced only with the correct type and fuse value, and only when the apparatus is powered off.
- Exposure to high sound pressure levels may lead to permanent hearing loss. Take every precaution to protect your hearing.

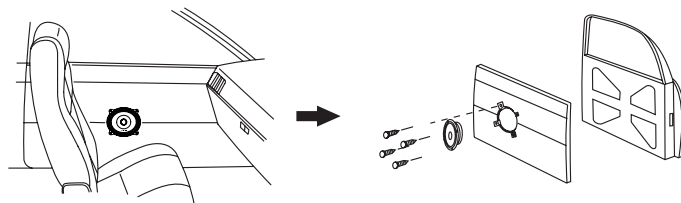
INSTALLATION

6. Strip the speaker wires and connect them to the amplifier.

- Consult the diagram below. Be sure to connect corresponding terminals, i.e. "+" to "+" and "-" to "-". Connection with reversed polarity will degrade the quality of production.
- Connect the provided speaker cord to the speaker terminal while holding the lower portion of the speaker terminal.

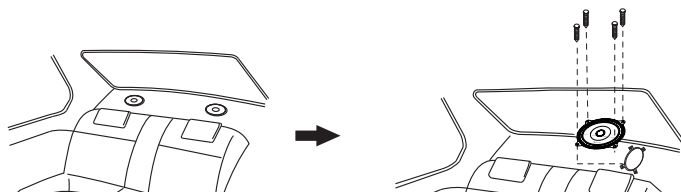


7. Mount on the speaker as shown below.



OPTION 2 : MOUNT ON REAR TRAY

You can also mount the speakers into the surface of the rear tray. Follow the steps in section "Option 1: Mount on door" to mount the speakers into the rear tray.



WHAT'S IN THE BOX

Check and identify the contents of your package:

- | | | |
|---------------------------|------------------------------------|-----------------------|
| 1. Speakers x 2pcs | 3. Gaskets (Ø18xØ6 - 1.5mm) x 8pcs | 5. User Manual x 1 pc |
| 2. Screw (M5x25mm) x 8pcs | 4. Mounting Template x 1 pc | |

NSI-NB893 User Manual

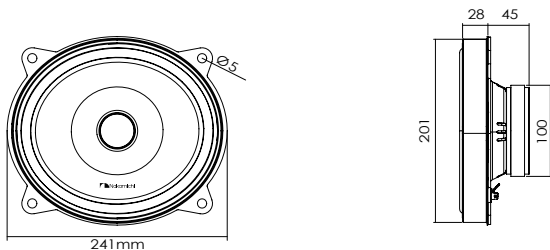


8x9" 中低音揚聲器



CONNECT WITH US ONLINE TO EXPLORE NAKAMICHI'S COMPLETE RANGE,
INSTRUCTIONS & SOFTWARE DOWNLOADS AND WARRANTY REGISTRATION.
WWW.NAKAMICHICARAUDIO.COM
f nakamichi.global @ nakamichi.caraudio

產品尺寸(單位mm)



產品規格

揚聲器類型:	8x9" (201x241mm) 二路	頻率範圍:	45Hz-7.5kHz
安裝深度:	>1.77" (45mm)	標準阻抗:	4Ω
額定功率 (1對):	80 watts (1個), 160 watts (1對)	音圈規格:	ASV Φ38.55mm
最大峰值功率:	560 Watts (1個), 1120 watts (1對)	磁鋼重量:	15.23 OZ (432g)
靈敏度 (dB/W/m):	88±3 dB	淨重 (1對揚聲器):	約 3.0kg (±0.3kg)

安裝方式

方案1: 安裝在車門上(前車門或後車門) 您可將揚聲器安裝在汽車的前/後車門上

- 確保車門上的安裝周圍沒有任何阻礙物
- 車門(前車門或後車門)的內側面板可能已經切割好安裝孔。在此情況下,只需修改安裝板。
- 確保揚聲器終端,外框或磁鐵不會妨礙到任何內部零件,如車門上的車窗系統(不會妨礙打開或關閉車窗)。同時還要確保揚聲器不會碰觸到任何內部配件,如車窗搖柄、車門把手、扶手等。

1. 關閉汽車的点火開關。
- 如果電源為接通狀態,則電源連接所產生的震動聲可能會對揚聲器造成損壞。
2. 從包裝盒中裁出安裝模板。
3. 將模板貼在安裝揚聲器的位置上。
4. 標記好定點孔和4個螺栓孔。(圖1)
5. 切除標記部分,並鑽開螺栓孔。(圖2)

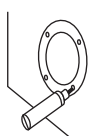


圖1

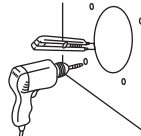


圖2

您的產品

尊敬的客戶:

感謝您購買了適用於您的音響系統的Nakamichi移動系統產品。
該產品的設計和製造符合Nakamichi的嚴格標準,可確保多年的音頻享受。為了獲得更佳性能,我們建議您由授權的Nakamichi經銷商安裝Nakamichi產品。
如果您想自行安裝此產品,我們建議您通讀本手冊以熟悉所有安裝要求和過程。
如果您遇到任何問題或對本產品的使用有任何疑問,請聯繫離您最近的Nakamichi授權經銷商以尋求幫助,或者您也可以通過我們的網站或社交媒體渠道與我們聯繫。

產品安裝

在當今的現代車輛中,很容易因安裝不當而損壞現有系統。請遵循並仔細檢查所有接線圖,以確保已正確連接所有部件。
如果您不熟悉接線和安裝,請與最近的Nakamichi經銷商聯繫以進行安裝。

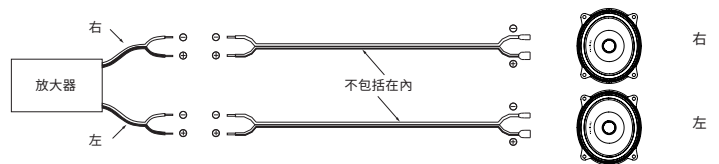
安全警告和注意事項

- 僅用乾布或其他類似材料清潔。
- 將產品安裝在乾燥,通風良好的位置,不會干擾車輛的安全設備。
- 安裝本產品時,請勿阻塞任何通風口。
- 請勿將產品安裝在車輛的發動機艙內或任何過熱的地方,例如消聲器,消音器,排氣管或其他生熱設備。
- 牢固安裝產品,以免在碰撞或正常操作期間可能反復振動的情況下鬆動。
- 必須非常小心地安裝設備,以防止損壞車輛的燃油管路,電源和其他電線,液壓制動管路以及其他系統。如果可能,請始終與您最近的中道經銷商聯繫以進行安裝。
- 請勿在車輛外部或下方佈線。將所有電線保持在車內。
- 連接車輛電池時,請採取必要的預防措施,以免造成任何潛在的電擊。
- 小心佈線以保護所有系統電線免受尖銳邊緣的傷害,無論何時通過金屬開口安裝它們,請始終使用橡膠墊圈來保護電線和電纜。
- 使用電纜紮帶或線夾固定所有佈線,以防止其受到運動部件和尖銳邊緣的傷害。
- 請勿將本設備暴露在滴水或飛濺的液體上,也不要在其上放置裝有液體的物品。
- 將所有服務交給合格的服務人員。當設備以任何方式損壞時,例如電源輸入端子損壞,液體滲入或有物體掉入設備,設備被雨淋或受潮,無法正常工作。
- 保險絲只能用正確的類型和保險絲值更換,並且只能在設備斷電時更換。
- 暴露於高聲壓級可能會導致永久性聽力損失。採取一切預防措施來保護您的聽力。

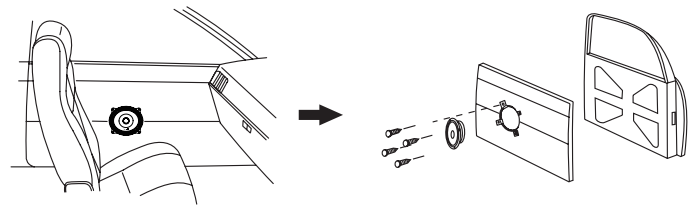
安裝方式

6. 連接低音揚聲器與功率放大器連接。

- 請參照下圖,一定要正確連接相應的端子,即左同左,右同右,和正極同正極,負極同負極,極性反置可導致音質下降。
- 握住揚聲器將產品內的揚聲器線連接到揚聲器端子上。

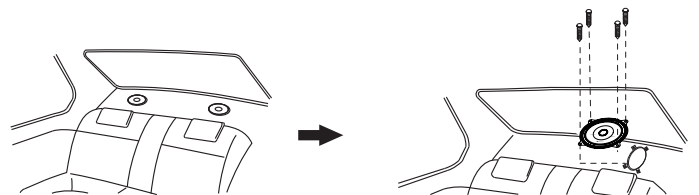


7. 如圖所示安裝揚聲器。



方案2: 安裝在後座托盤

您也可將此低音揚聲器安裝至後座托盤。請參閱“方案1”的步驟,將揚聲器安裝在後座托盤上。



包裝內物品

檢查並識別包裝中的物品:

1. 揚聲器 (x2個)
2. 螺絲 M5x25mm (x8顆)
3. 墊片 Ø18xØ6 - 1.5mm (x8個)
4. 安裝模板 (x1個)
5. 說明書 (x1張)